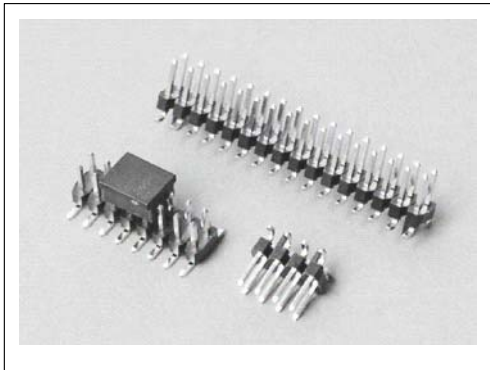




E38

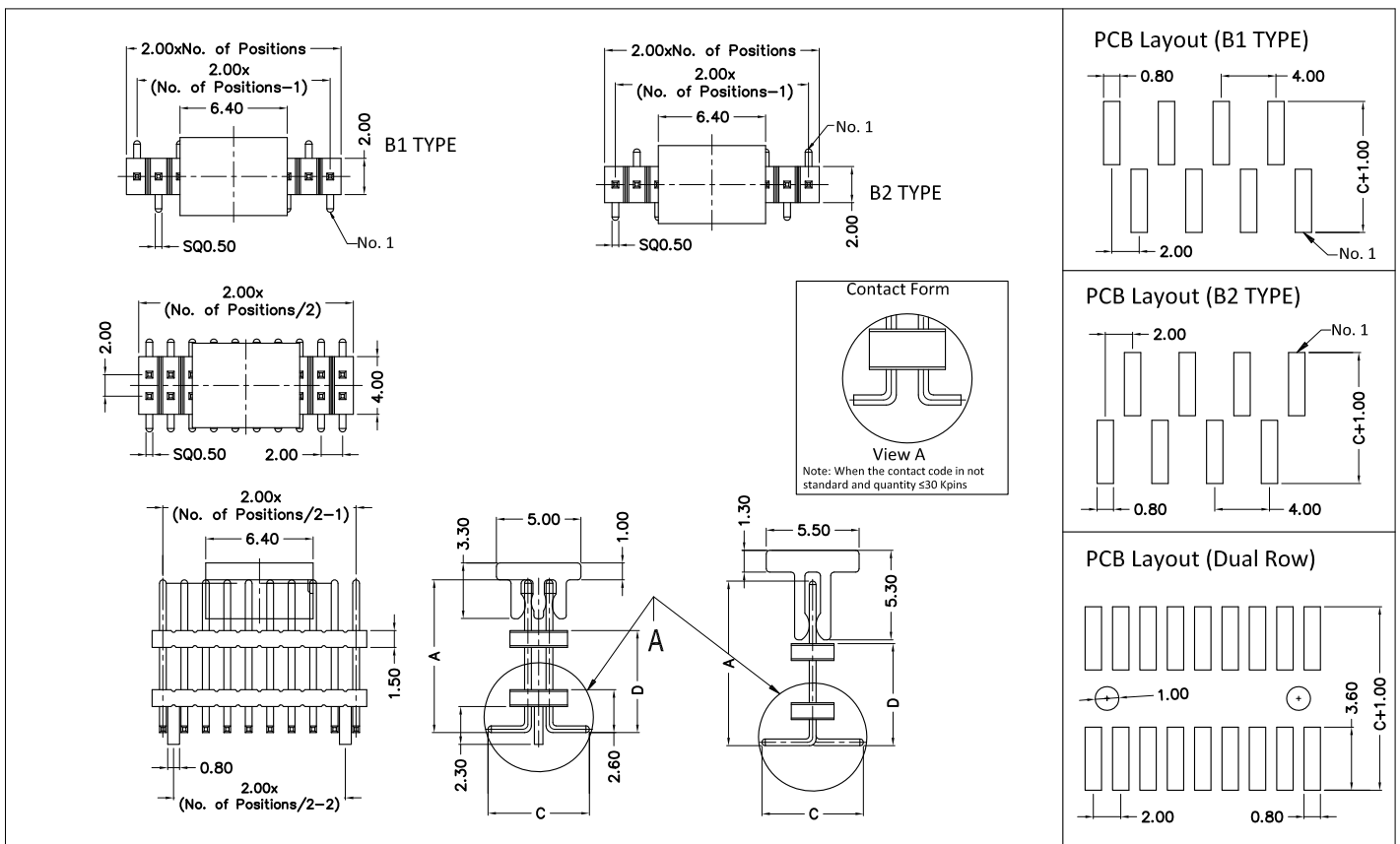
2.00mm Pitch Pin Header Single & Dual Row Dual Body Vertical SMT TYPE



Specification:

Insulator Material:	High Temperature Thermoplastic, UL94V-0.
Contact Material:	Copper Alloy, 0.50x0.50mm.
Contact Plating:	Au or Sn over Nickel.
Current Rating:	1 AMP.
Insulator Resistance:	500 Megohms Min.
Dielectric Withstanding:	500V AC for 1 Minute.
Operating Temperature:	-40°C ~ +105°C.
Max. Processing Temp.:	230°C for 30~60 seconds. 260°C for 10 seconds.

RoHS Compliant



Ordering Information: E38 - XXX - XX - XX - XX - XXX - XX - X - XX

1
2
3
4
5
6
7
8
9

1 --> Series Number:	E38
2 --> Contact Positions:	Single Row: 002-040, Dual Row: 004-080,
3 --> Layout option:	10: Single B1 TYPE, 11: Single B2 TYPE, 20: Dual Row
4 --> Stacker Height option:	As request: D=XX, For Eg: D=6.35, Code=6.35,
5 --> Dim. "A" option:	10: A=7.85, 11: A=9.86, 12: A=10.70, 13: A=11.86, 14: A=12.37, 15: A=15.37, 16: A=17.35, As request: D=XX, For Eg: D=6.35, Code=6.35,
6 --> Plating option:	100: Full Gold Flash Plated, 500: Tin Plated, 600: Selective Gold Flash Plated 610: 10U" selective Gold plated, 615: 15U" selective Gold plated 620: 20U" selective Gold plated, 630: 30U" selective Gold plated
7 --> CAP option:	00: Without CAP, 11: With CAP,
8 --> Packing option:	2: Tube, 3: T&R,
9 --> Location Peg option: (For Dual Row only)	00: Without Peg, 11: With Peg,